

EV Series Automated Dispensing Systems

Easy automation for precise fluid application with simple vision pencil camera



EV Series pencil camera vision makes programming patterns easier.

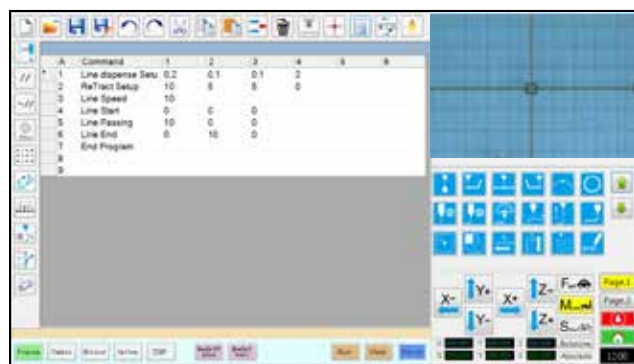
** X/Y calibration delivers best-in-class repeatability*



Pencil camera verifies product presence



Optional joystick puts the control of axis movement in your hands.



Vision-guided DispenseMotion software makes programming easy.

Nordson EFD's EV Series automated systems include simple vision for precise fluid dispensing using EFD syringe barrel and valve systems.

Specialized vision-guided DispenseMotion™ software and a simple pencil camera make EFD automated systems quick to set up and easy to program. True three-dimensional motion control allows easy programming of dots, lines, circles, arcs, and compound arcs.

Platforms range from 150 x 200 mm to 570 x 500 mm, making them an ideal solution for batching or critical dispensing applications.

The EV Series can work as a standalone system or as a key part of an automated solution and is easily integrated into in-line transfer systems, rotary tables, and pallet assembly lines.

Features

- Simple camera and DispenseMotion software make setup and programming easy
- On-screen preview of the dispensing path facilitates programming
- Streamlined file import and conversion
- True three-dimensional motion control
- Wide range of work envelopes

Benefits

- Faster cycle and batch times
- Easy integration into any manufacturing operation
- Reduced production, material, and ownership costs
- New manufacturing opportunities



more info

EV Series Specifications

Item/Model	E2V	E3V	E4V	E5V	E6V
Part number	7360856	7360857	7360858	7360859	7362103
Part # Europe*	7361349	7361350	7361351	7361352	7362104
Number of axes	3	3	3	3	3
Maximum working area (X / Y / Z)	150 / 200 / 50 mm (6 / 8 / 2")	250 / 300 / 100 mm (10 / 12 / 4")	350 / 400 / 100 mm (14 / 16 / 4")	450 / 500 / 150 mm (18 / 20 / 6")	570 / 500 / 150 mm (22 / 20 / 6")
Workpiece payload	5 kg (11.0 lb)	10 kg (22.0 lb)	10 kg (22.0 lb)	10 kg (22.0 lb)	10 kg (22.0 lb)
Tool payload	1.5 kg (3.3 lb)	3 kg (6.6 lb)	3 kg (6.6 lb)	3 kg (6.6 lb)	3 kg (6.6 lb)
Maximum speed (XY / Z)	500 / 250 mm/sec (20 / 10"/sec)	800 / 320 mm/sec (31 / 13"/sec)	800 / 320 mm/sec (31 / 13"/sec)	800 / 320 mm/sec (31 / 13"/sec)	800 / 320 mm/sec (31 / 13"/sec)
Unit weight	29 kg (64 lb)	47.5 kg (105 lb)	52.5 kg (116 lb)	55 kg (121 lb)	58 kg (128 lb)
Dimensions	480w x 435h x 510d mm (19w x 17h x 20d")	595w x 538h x 645d mm (23w x 21h x 25d")	695w x 638h x 645d mm (27w x 25h x 25d")	795w x 717h x 815d mm (31w x 28h x 32d")	915w x 717h x 815d mm (36w x 28h x 32d")
Drive system	3-phase micro-stepping motor	3-phase micro-stepping motor	3-phase micro-stepping motor	3-phase micro-stepping motor	3-phase micro-stepping motor
Memory capacity	PC storage	PC storage	PC storage	PC storage	PC storage
Data storage	PC storage / USB	PC storage / USB	PC storage / USB	PC storage / USB	PC storage / USB
General purpose I/O	8 inputs / 8 outputs (16 / 16 optional)	8 inputs / 8 outputs (16 / 16 optional)	8 inputs / 8 outputs (16 / 16 optional)	8 inputs / 8 outputs (16 / 16 optional)	8 inputs / 8 outputs (16 / 16 optional)
Drive method	PTP and CP	PTP and CP	PTP and CP	PTP and CP	PTP and CP
Dispensing controller	External	External	External	External	External
Power supply	Auto-switching, AC100–240V, 230 W	Auto-switching, AC100–240V, 350 W	Auto-switching, AC100–240V, 350 W	Auto-switching, AC100–240V, 350 W	Auto-switching, AC100–240V, 350 W
Interpolation	3 axes (3D space)	3 axes (3D space)	3 axes (3D space)	3 axes (3D space)	3 axes (3D space)
Repeatability**	±0.008 mm	±0.008 mm	±0.008 mm	±0.008 mm	±0.008 mm
Working temperature	10–40° C (50–104° F)	10–40° C (50–104° F)	10–40° C (50–104° F)	10–40° C (50–104° F)	10–40° C (50–104° F)
Precision vision	Included	Included	Included	Included	Included
DispenseMotion software	Included	Included	Included	Included	Included
Tip detection	Optional	Optional	Optional	Optional	Optional
Approvals	CE, RoHS, WEEE, China RoHS				

* Complies with European safety regulations.

** Repeatability results may vary depending on method of measurement.

Free Process Evaluation

Contact Nordson EFD to configure an automated dispensing system that meets your specific needs.

- A complimentary process evaluation by experienced fluid dispensing experts
- Samples processed for customer evaluation and approval prior to purchase

PRO Series

EFD's PRO Series includes smart vision CCD camera and laser height sensing capabilities for a fully integrated dispensing solution.



For Nordson EFD sales and service in over 40 countries, contact Nordson EFD or go to nordsonefd.com

Global

East Providence, RI USA
800-556-3484; +1-401-431-7000
info@nordsonefd.com

Europe

Dunstable, Bedfordshire, UK
0800 585733; +44 (0) 1582 666334
europe@nordsonefd.com

Asia

China: +86 (21) 3866 9006; china@nordsonefd.com
India: +91 80 4021 3600; india@nordsonefd.com
Japan: +81 03 5762 2760; japan@nordsonefd.com
Korea: +82-31-736-8321; korea@nordsonefd.com
SEAsia: +65 6796 9522; sin-mal@nordsonefd.com

©2016 Nordson Corporation v120116